

MY ENSŌ
LOFTS

BECAUSE YOU DESERVE EXTRA



Discover Extra Living at **My Ensō Lofts**

- Project Background 1
- Addloft Technology 3
- Studio Unit4
- 1 Bedroom7
- 2 Bedroom11
- Features and Amenities 17
- Location 21
- Project Proponents 22
- Builder Partner 23
- Contact Details 24

Disclaimer: All information stated is intended to give a general overview of the project. The developer reserves the right to modify as it sees fit without prior notice. For announcement purposes only.

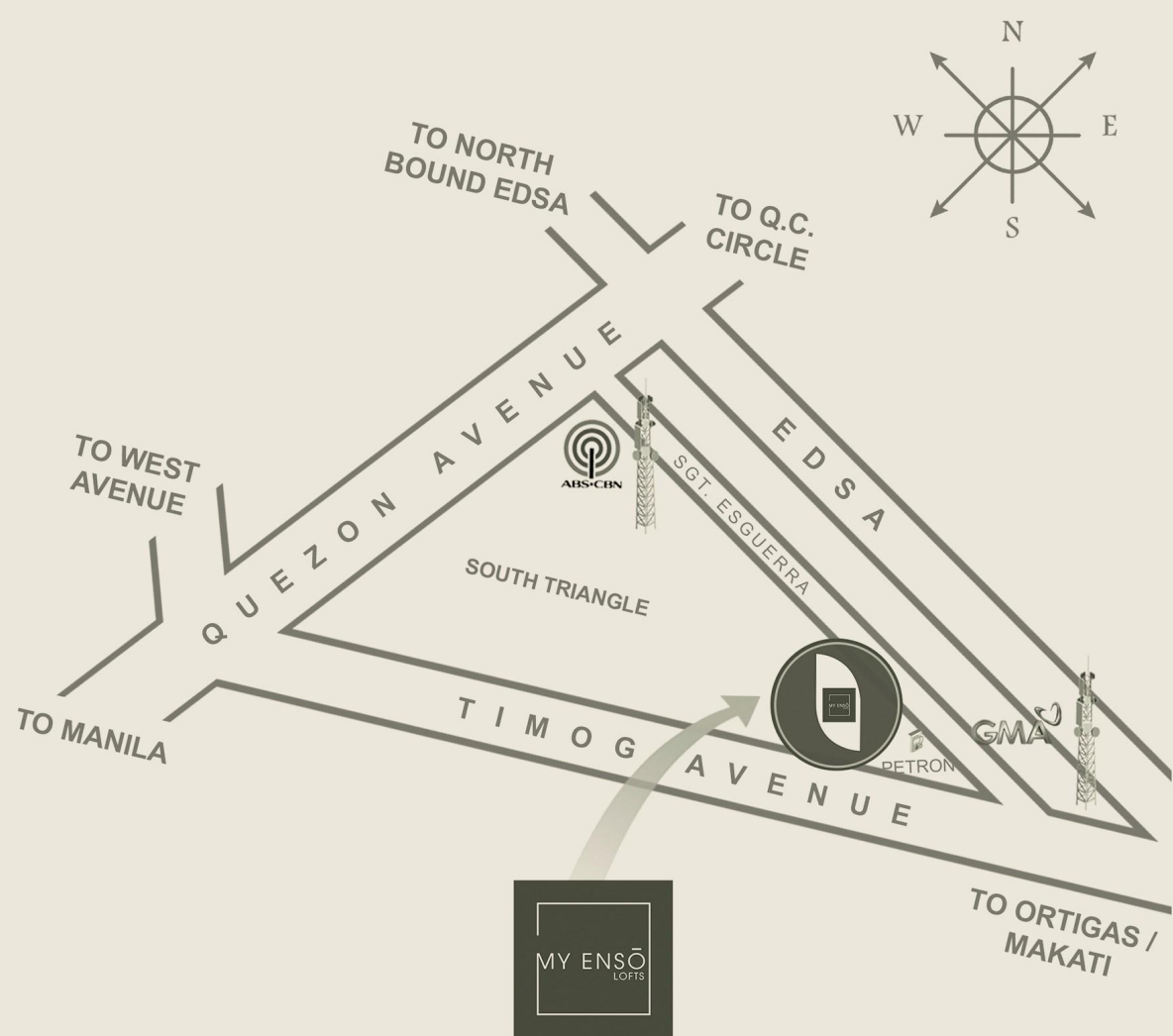
Imagine a place where you can fulfill the lifestyle you've always wanted.

Imagine a space where you can have more, do more, and be more.

My Ensō Lofts, the newest residential condominium developed by PH1 World Developers (PH1 World) and built by Megawide offers the kind of extra that fits your needs - An additional unit space at no extra cost.

My Ensō Lofts.
Because you deserve extra.

Why My Ensō Lofts?



My Ensō Lofts offers extra space to fit every resident's extraordinary lifestyle at no extra cost. Be it for living or storage, as much as 38% usable space gives residents more freedom to customize their unit.

It also incorporates the philosophy of ZEN in its design, employing peaceful simplicity, refined colors, natural fixtures, and innovative design to provide comfort and balance needed amid city life.



Why My Ensō Lofts?

6 Parking basement levels

3 Retail floors

- Restaurants, bars, coffee shops, salons, boutiques and minimart

2 Amenity floors

- 2 Infinity pools
- Play area for kids
- ZEN-themed garden
- Co-working spaces
- Lounge areas
- Function rooms
- Gym

40 Residential floors

- Average of 30 units per floors w/ combined units
- Sky Gardens located on specific floors

Extra living with Addloft

My Ensō Lofts introduces engineering technologies such as AddLoft, utilizing every unit's high ceiling to expand its usable area. This gives residents the freedom to personalize the extra space.





Studio Unit

Standard living never felt so extra. Our studio units take advantage of the refined and minimalist architecture to provide extra space you won't find in usual studio units.

Disclaimer: All information stated is intended to give a general overview of the project. The developer reserves the right to modify as it sees fit without prior notice. For announcement purposes only.



Studio Unit



- Location: Floors 5 to 41
- Unit Area: 19.60 sqm
- Addloft Area: 7.40 sqm
- Total Area: 27 sqm

Studio Unit Addloft Area

Expand your Studio Unit with infinite living, work, and storage possibilities.





1 Bedroom Unit

Our 1 Bedroom Unit provides extra personal space on top of your floor space.

Disclaimer: All information stated is intended to give a general overview of the project. The developer reserves the right to modify as it sees fit without prior notice. For announcement purposes only.



1 Bedroom Alpha unit

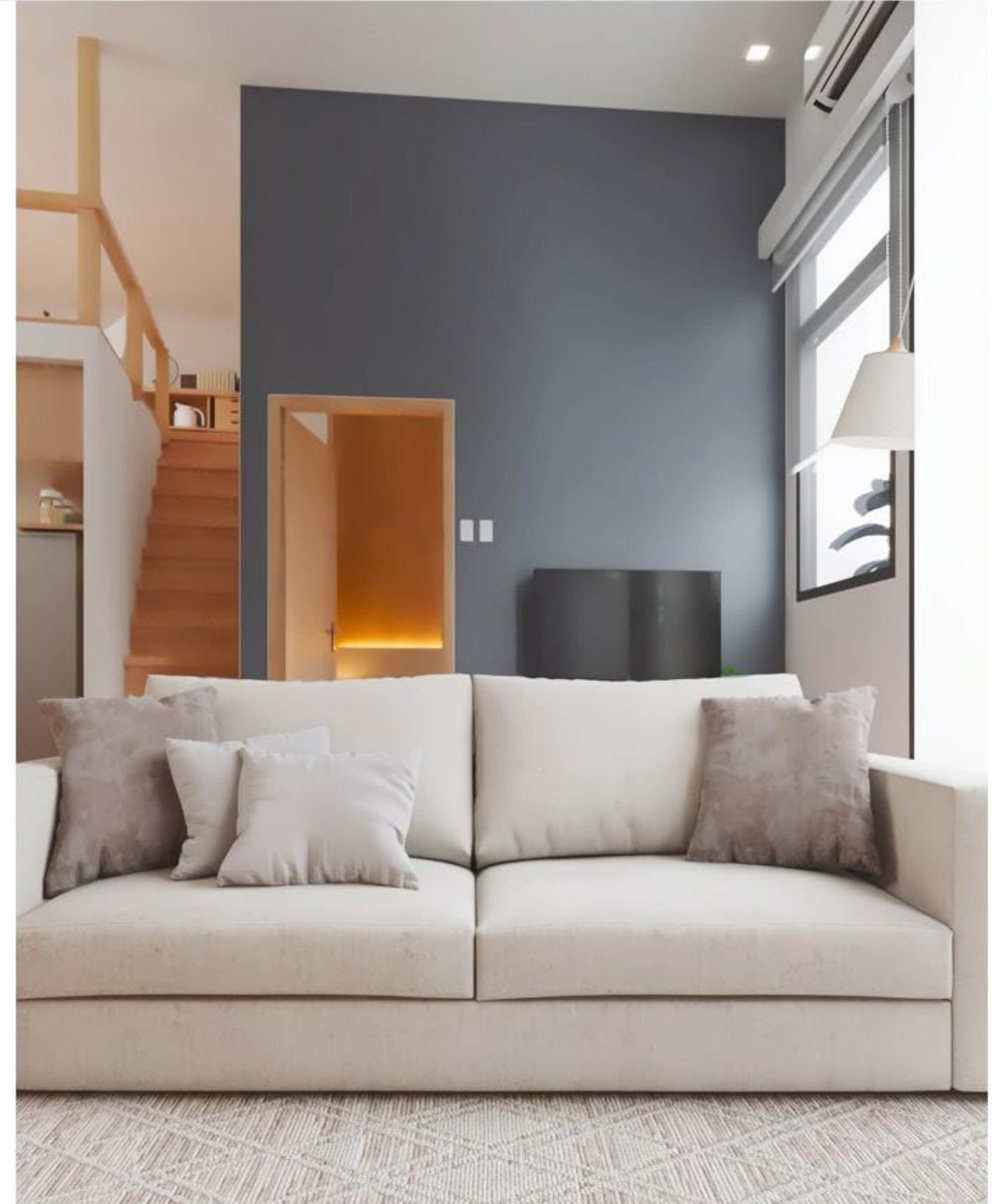


- Location: Floors 5 to 41
- Unit Area: 34.06 sqm
- Addloft Area: 7.83 sqm
- Total Area: 41.89 sqm

1 Bedroom Beta unit



- Location: Floors 42 to 45
- Unit Area: 39.20 sqm
- Addloft Area: 11.72 sqm
- Total Area: 50.92 sqm





1 Bedroom Addloft Area

Expand the possibilities of your extra space. May it be for living, working, and storage needs.



Alpha Unit



Beta Unit



2 Bedroom Unit

Our spacious 2 Bedroom Unit can cater to even large families and a group of college friends, perfect for those wanting to live comfortably while building a harmonious environment.

Disclaimer: All information stated is intended to give a general overview of the project. The developer reserves the right to modify as it sees fit without prior notice. For announcement purposes only.



2 Bedroom Alpha unit

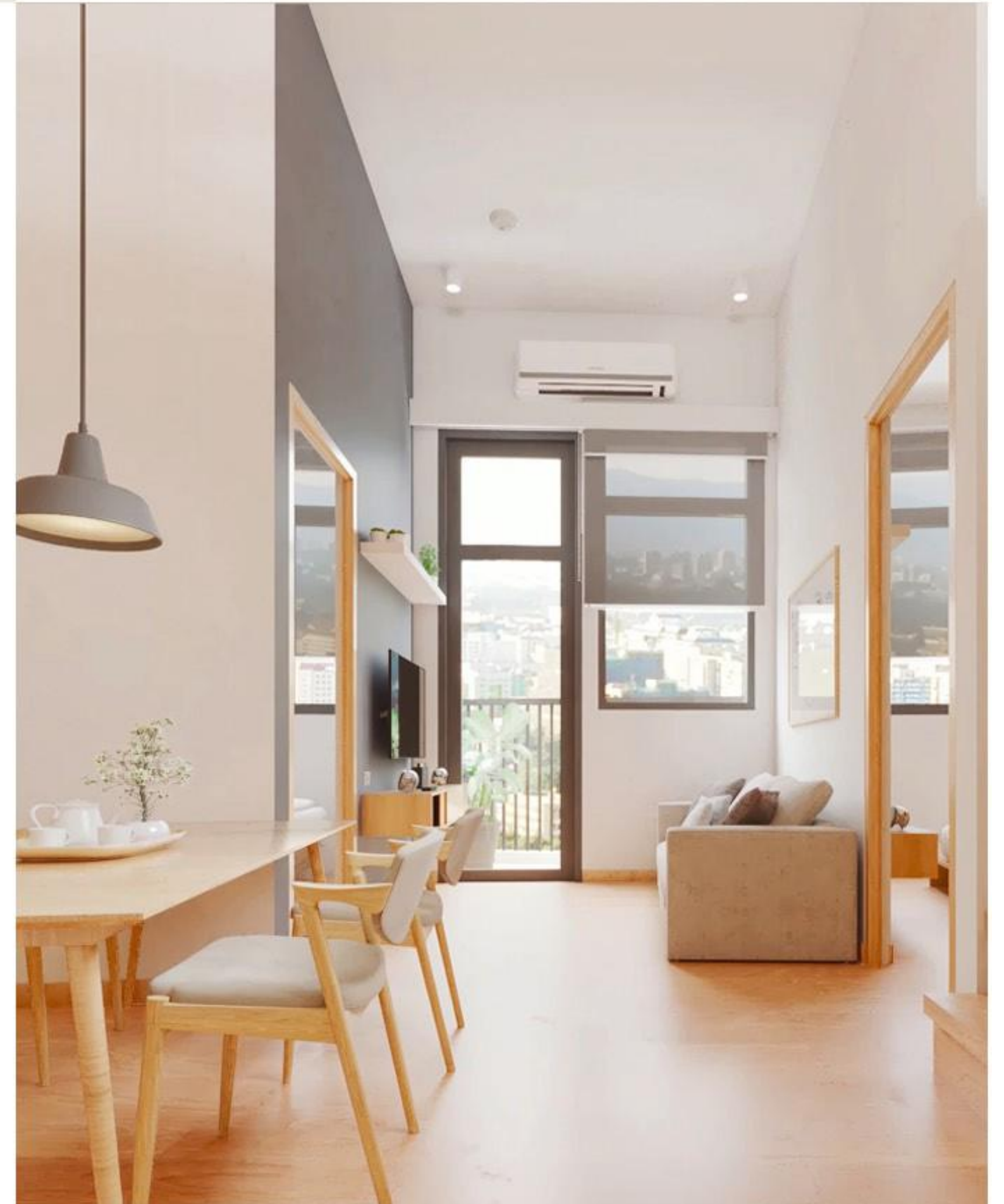


- Location: Floors 2 to 45
- Unit Area: 50.08 sqm
- Addloft Area: 10.33 sqm
- Total Area: 60.41 sqm

2 Bedroom Beta unit



- Location: Floors 5 to 45
- Unit Area: 48.70 sqm
- Addloft Area: 18.78 sqm
- Total Area: 65.20 sqm





2 Bedroom Charlie Unit



- Location: Floors 42 to 45
- Unit Area: 68.12 sqm
- Addloft Area: 16.58 sqm
- Total Area: 84.70 sqm

2 Bedroom Delta unit



- Location: Floors 42 to 45
- Unit Area: 58.80 sqm
- Addloft Area: 13.14 sqm
- Total Area: 71.94 sqm



2 Bedroom Addloft Area

Have a customizable area for you and your loved ones thanks to extra space above your floor space.



Alpha unit



Beta unit



Charlie unit



Delta unit



Amenities and Features

Take pleasure in extraordinary amenities, including 2 infinity pools, a play area for kids, a ZEN garden, a co-working space, a gym, lounge, and function rooms. Every area is designed with open and light-filled spaces to provide residents their well-deserved breather.

Disclaimer: All information stated is intended to give a general overview of the project. The developer reserves the right to modify as it sees fit without prior notice. For announcement purposes only.

Extraordinary Amenities

Discover state-of-the-art facilities and equipment located at the 3rd and 4th level of My Ensō Lofts.

Amenities offered to residents are creatively developed to enhance exceptional lifestyles.





Extraordinary Safety

Smart-building design offers homeowners 24/7:

- Digital Connectivity
- Keyless Entry
- 24-hour Security
- Automatic Fire Sprinkler System
- Centralized Mailroom System
- 8 Elevators (including one service elevator)
- Standby Generators

Extraordinary Location

Now everything's within reach as My Ensō Lofts sits at the very heart of Quezon City.

My Ensō Lofts is located near major transport networks and is just a 10-minute walk to GMA Kamuning. The building is near vibrant and progressive establishments, and offers access to well-known malls and schools in Metro Manila.



Project Proponents

Architectural - Edward Co Tan + Architects

Interior Designer - Edward Co Tan + Architects

Mechanical - Integraltech, Inc.

Electrical - Roberto C. Divina Electrical Design Consultancy

Plumbing - Integraltech, Inc.

Fire Protection - Integraltech, Inc.

Landscape Design- Land Style Design Studio

Structural Design - B. Cabebe Engineering & Consulting Services



Extraordinary Partners

PH1 World Developers is a new real estate company that aims to disrupt property development conventions through innovation and engineering technology.

Extraordinary Developer



Extraordinary Builder



LTS No. 083
CR No. 048



EXTRA

BECAUSE YOU DESERVE